

CERTIFIED LAND CORNER RECORDATION

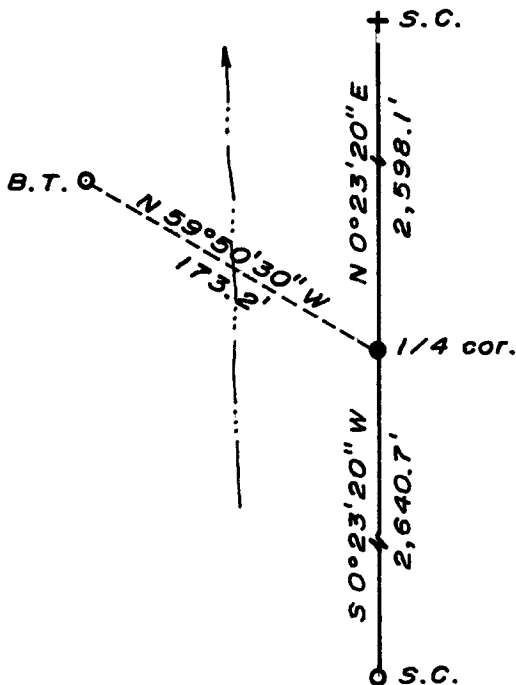
DESCRIPTION OF CORNER EVIDENCE FOUND, AND ORIGINAL RECORD (If known)

LOCATION Found 6" x 10" Granite stone with "1/4" on west face and burned shell (standing) of 36" dia. Pine tree.
 1/4
 S.28S.27 G.L.O. record - "Set a Granite Boulder 15 x 15 x 10 for 1/4 Sec. Cor. from
 T.17N., R.70W. which a Pine tree 36 inch. dia. Bears N 59°30' W 200 lks. dist." [John
 6th P.M. B. Thomas, 1872]

DESCRIPTION OF MONUMENT AND ACCESSORIES ESTABLISHED TO PERPETUATE THE ORIGINAL LOCATION OF THIS CORNER:

At the corner: Set a 1 1/2" dia. x 30" long iron pipe with brass cap.
 Accessories: Aforementioned shell of 36" dia. Pine tree bears N 59°50'30" W, 173.2 feet distant.
 Left stone as memorial.

SKETCH, WITH COURSE AND DISTANCE TO ADJACENT CORNER IF DETERMINED IN THIS SURVEY.
 (May Sketch or Paste Reproduction on Reverse Side.)



Brass cap set 6" above ground.
 Brass cap stamped:
 T.17N. R.70W.
 1/4
 S.28 S.27
 LS 519 1975

I, R.L. Hudson certify that I have carefully performed ~~or reviewed~~ the work done on the diagrammed corner as reported on this recordation form and approve the same.

R.L. Hudson Wyoming L.S. No. 519
 Signature of Surveyor Registration No.

STATE OF WYOMING,
 Office of Clerk and Recorder,
 County of Saramee

This "corner record" was filed for record on the 20 day of August, 1975, was noted on the cross-index plat and is assigned page No. _____, in book No. _____.

Janet J. Whitehead
 County Official

Cross Index No. <u>T-13</u>	T. <u>17</u>	R. <u>70</u>	Mer.
_____	T. _____	R. _____	Mer.
_____	T. _____	R. _____	Mer.
_____	T. _____	R. _____	Mer.
_____	T. _____	R. _____	Mer.
_____	T. _____	R. _____	Mer.
_____	T. _____	R. _____	Mer.

The State of Wyoming }
County of Laramie } SS

This instrument was filed for record
at 2¹⁰ o'clock P M. on the
20 day of August
A. D. 19 71 and duly recorded in
book _____ on page _____

James C. Whitbread

County Clerk & Ex-Officio Register at Deaths
By _____ Deputy